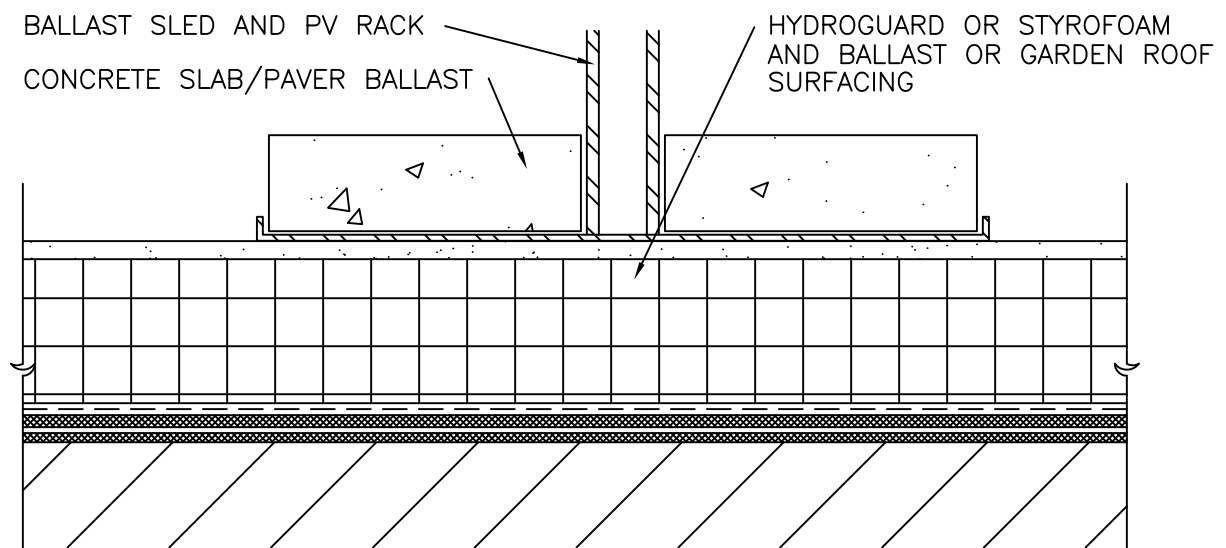


TYPICAL PIPE STANDOFF



TYPICAL BALLAST SLED

NOTES: PENETRATION MUST BE PROPERLY SECURED TO STRUCTURE TO PREVENT MOVEMENT.  
 SOME PIPE MATERIALS (PVC, COPPER, BRASS) MAY REQUIRE ROUGHENING/SANDING IN ADDITION TO LIGHT PRIMING FOR PROPER ADHESION OF THE MM 6125.  
 METAL PIPES MUST BE FREE OF ALL OIL AND RUST.  
 PV PANEL OR SUPPORT RACK SUPPLIER MUST BE CONSULTED FOR PROPER INSTALLATION AND ACCESSORY INFORMATION.



Monolithic Membrane  
 6125-FR  
 ROOFING SYSTEMS

AMERICAN HYDROTECH, INC.

TYPICAL PHOTOVOLTAIC PANEL RACK INSTALLATION OPTIONS

3"=1'-0"

R-7C